



Kubota



**KX030-4**

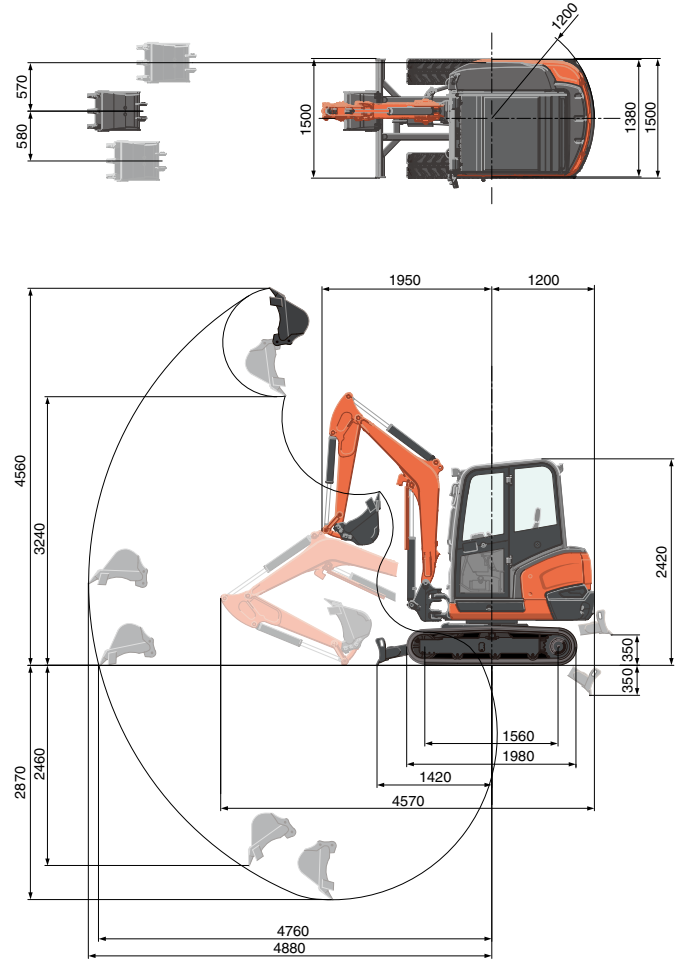
**2-3 TONNE MINI EXCAVATOR**

Efficient, comfortable and versatile  
Machine Weight (cabin/canopy) 2790/2720  
Engine output 24PS/17.7kW

# KX030-4 | EXCAVATOR SPECIFICATIONS

Model		KX030-4		
Machine weight* <sup>1</sup>	Cabin / Canopy	kg	2790 / 2720	
Operating weight* <sup>2</sup>	Cabin / Canopy	kg	2865 / 2795	
Engine	Model		V1505-E4	
	Type		Water-cooled, diesel engine E-TVCS (Economical, ecological type)	
	Output ISO9249 NET	PS/rpm	24 / 2250	
		kW/rpm	17.7 / 2250	
	Number of cylinders		4	
	Bore × Stroke		mm	78 × 78.4
	Displacement		cc	1498
Dimensions	Overall width		mm	1500
	Overall height (Cabin / Canopy)		mm	2420 / 2420
	Overall length		mm	4570
	Ground clearance		mm	300
	Dozer size (width × height)		mm	1500 × 300
	Rubber shoe width		mm	300
	Minimum front swivel radius with boom swing (left / right)		mm	1950 / 1560
	Boom swing angle (left / right)		deg	77 / 57
Hydraulic System	P1, P2	P1, P2		Variable displacement pump
		Flow rate	ℓ/min	31.5 × 2
		Hydraulic pressure MPa (kgf/cm <sup>2</sup> )		23.5 (240)
	P3	P3		Gear pump
		Flow rate	ℓ/min	18.0
		Hydraulic pressure MPa (kgf/cm <sup>2</sup> )		19.6 (200)
	Auxiliary (AUX1)	Max. flow rate	ℓ/min	49.5
		Max. hydraulic pressure MPa (kgf/cm <sup>2</sup> )		23.5 (240)
	Auxiliary (AUX2)	Max. flow rate	ℓ/min	18.0
		Max. hydraulic pressure MPa (kgf/cm <sup>2</sup> )		19.6 (200)
	Max. digging force, arm		kN (kgf)	16.2 (1650)
	Max. digging force, bucket		kN (kgf)	25.4 (2590)
	Hydraulic reservoir (tank / full)		ℓ	34 / 51
Max. travelling Speed	Low	km/h	2.9	
	High	km/h	4.5	
Ground contact pressure	Cabin	kPa (kgf/cm <sup>2</sup> )	26.6 (0.27)	
	Canopy	kPa (kgf/cm <sup>2</sup> )	25.9 (0.26)	
Swivelling speed		rpm	9.5	
Fuel tank capacity		ℓ	48	

## WORKING RANGE



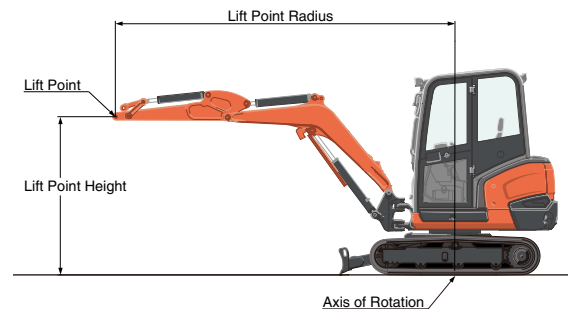
1300 mm arm  
Unit: mm

\*<sup>1</sup> With 65kg standard bucket, 1300mm arm, full tanks, rubber shoe.  
\*<sup>2</sup> With 75kg operator, 1300mm arm, 65kg standard bucket, full tanks, rubber shoe.

## LIFTING CAPACITY

Lift Point Height	Lifting point radius (2.5m)			Lifting point radius (max.)		
	Over-front		Over-side	Over-front		Over-side
	Blade Down	Blade Up		Blade Down	Blade Up	
1.5m	7.6 (0.78)	7.6 (0.78)	6.5 (0.66)	-	-	-
1.0m	9.0 (0.92)	7.4 (0.75)	6.2 (0.63)	4.9 (0.50)	3.5 (0.36)	3.0 (0.31)
0.5m	9.9 (1.01)	7.2 (0.73)	6.0 (0.61)	-	-	-
0m	10.2 (1.04)	7.0 (0.72)	5.9 (0.60)	-	-	-

\*The lifting capacities are based on ISO 10567 and do not exceed 75% of the static tilt load of the machine or 87% of the hydraulic lifting capacities of the machine.  
\*\*The excavator bucket, hook, sling and other lifting accessories are not included on this table.



\* Working ranges are with Kubota standard bucket, without quick coupler.  
\* Specifications are subject to change without notice for purpose of improvement.